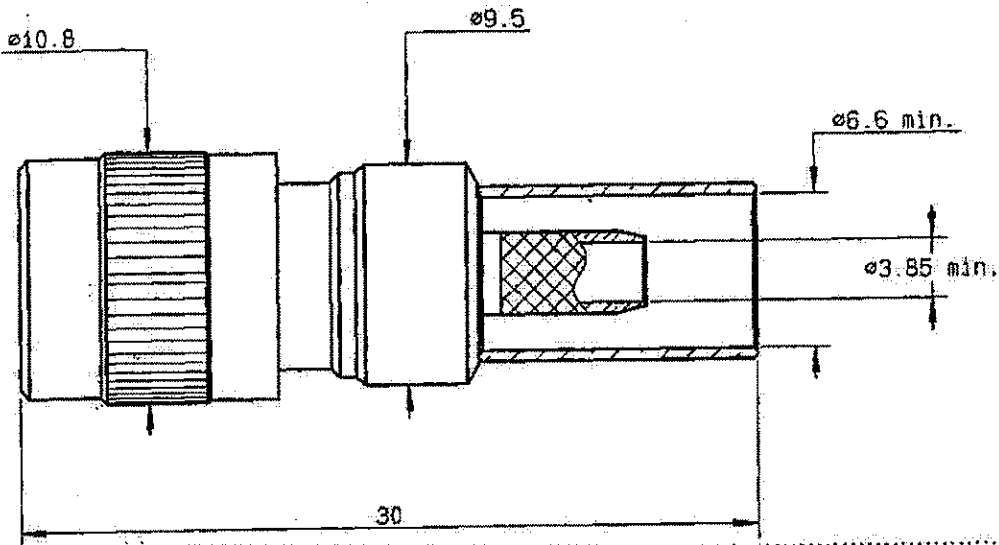


**STRAIGHT PLUG CRIMP TYPE
CABLE 6/75 SB**

R129.084.000
SERIES **V1.6-5.6**



NOMINAL IMPEDANCE	75 Ω
FREQUENCY RANGE	0-1 GHz
TEMPERATURE RATING	-40 +155 °C
V.S.W.R	1.22 + 0 x F(GHz)Maxi
RF INSERTION LOSS	0.1 \sqrt{F} (GHz) dB Maxi
VOLTAGE RATING	1000 Veff Maxi
DIELECTRIC WITHSTANDING VOLTAGE	1500 Veff Mini
INSULATION RESISTANCE	500 M Ω Mini
HERMETIC SEAL	NA Atm.cm ³ /s
LEAKAGE (pressurized only)	NA
MECHANICAL DURABILITY	1000 Cycles
WEIGHT	g
SPECIFICATION	

CABLES : KX 6A
RG 59

OTHERS CHARACTERISTICS

CABLE RETENTION	100 N Mini
CENTER CONTACT RETENTION	
Axial force - mating end	27 N Mini
Axial force - opposite end	27 N Mini
Torque	cm.N Mini
RECOMMENDED TORQUES	
Mating	30 cm.N
Panel nut	cm.N
Clamp nut	cm.N

CONNECTOR PARTS	MATERIALS	FINISH	(all values are given) in micrometers
BODY	BRASS	NICKEL .	
OUTER CONTACT	BRONZE	GOLD .	
CENTER CONTACT	BRASS	GOLD .	
INSULATOR	PTFE	-	
GASKET		-	
OTHERS PIECES			

ISSUE	CREATION DATE	FILE PART-NUMBER
0826 H02	25-JUL-90	



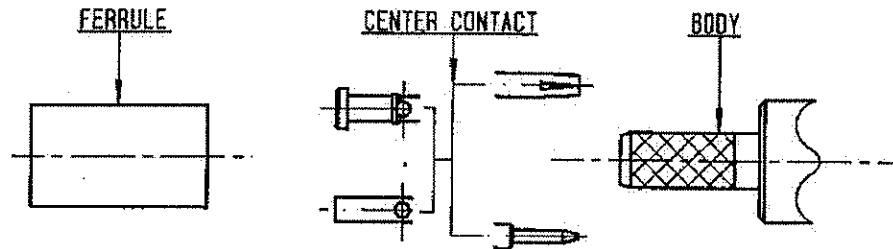
The information given here is subject to change without notice.
Design changes may be in order to improve the product .

Connect to the future



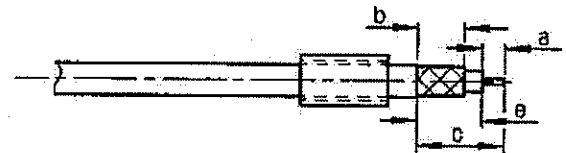
R129.084.000

ISSUE 0826H02 SERIES V1.6-5.6



①

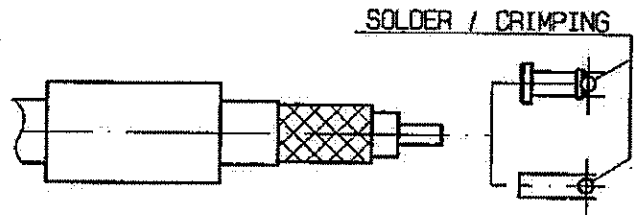
Slide ferrule onto cable
Strip the cable .



Stripping	a	b	c	d	e
inch	0.157	0.354	0.591	0	0.433
mm	4	9	15	0	11

②

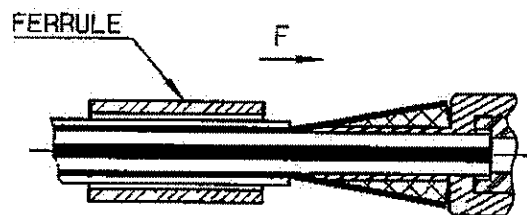
Slide center contact on until it bottoms against cable dielectric .
Solder or crimp center contact .
Crimping tool :R282 281 000 (reglage = 5)
positioneer R 282 968 000



SOLDER / CRIMPING

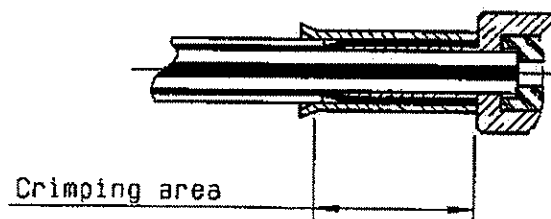
③

Fan the braid .
Slide cable into the body until bottoms against insulator .
Slide ferrule over the braid .
(In direction F)



④

Crimp the ferrule with crimping tool
R282.223.000 (Hex. : 6.48 Lg 10)
Cut excess of braid if necessary .



Crimping area